

# EMST Konark 820S



## Eight Zone Reflow Oven

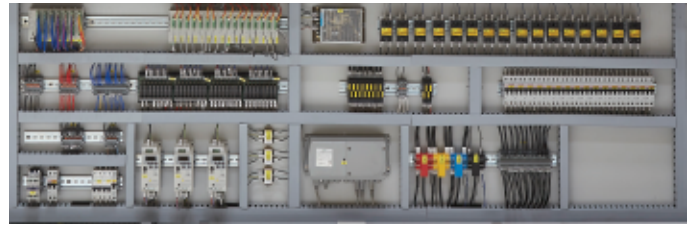
Konark 820S is the 8 zone Lead Free Reflow Oven from EMS Technologies, Pune, India. After successfully launching the 7 zone reflow and the 5 zone reflow,, this 8 zone reflow is launched with two cooling zones.

The reflow comes with the same quality and reliability in terms of mechanical as well as electrical/electronics parts, which is now proven in the field.

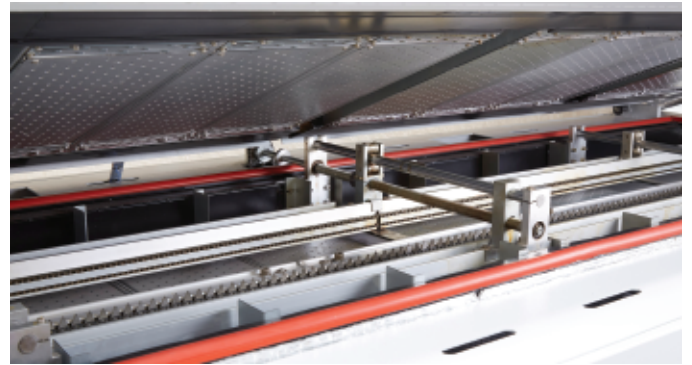
EMS Technologies has now emerged as the leading Indian supplier of all the SMT machines including Stencil Printers and Wave Soldering machines.

# Features:

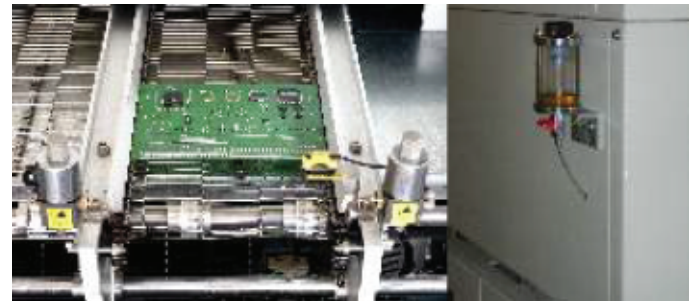
- 16 Independently PID Controlled Heating Zones (8 Top & 8 bottom zones)
- Two Cooling Zones incorporated inside the process chamber.
- Tunnel length of 2062 mm
- Maximum PCB width of 400 mm
- Mesh, Chain (pin-edge) or Chain above Mesh
- Auto conveyor width adjustment
- Electrically Operated hood opening.
- Max. temperature : 300°C
- Lead-free compatible
- PC Control with Windows based operation.
- 4 channel profiler option
- Flux Management System (Optional)
- SMEMA Interface (Optional)



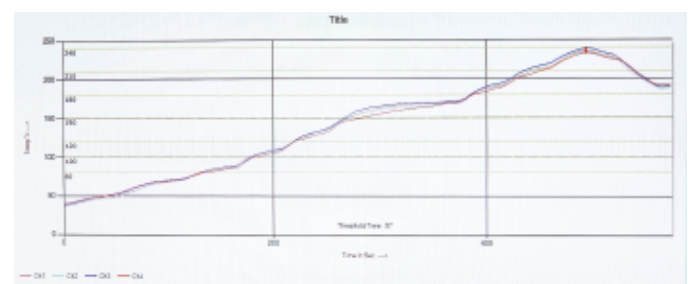
Well laid out control panel giving full access for easy maintenance.



Conveyor rail made of special Aluminium alloy with high rigidity, accuracy and little distortion. Conveyor mesh made of Stainless Steel. Pin type conveyor for inline operation with 3 mm pin.



Automatic chain lubricating system controlled by computer and can be programmed. Supply of oil from glass jar at the back of the machine.



Optional 4 channel profiler allows full screen display of 4 thermocouple inputs on-line and also displays  $\Delta T$ .



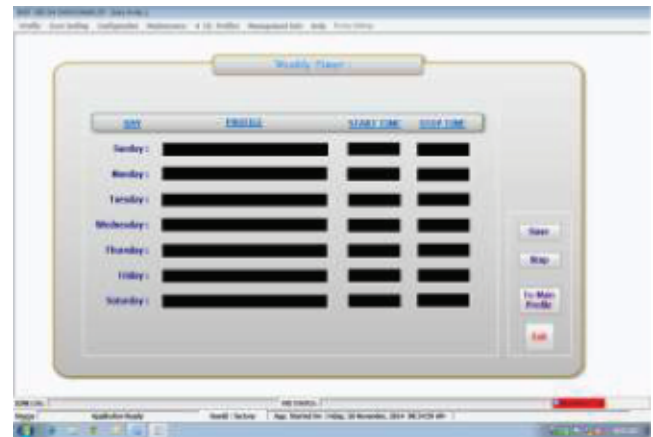
Input and Output status of all I/O controls can be seen with status indication for easy maintenance and troubleshooting



Manual or Service Mode of operation, which is Password protected, available for independently checking almost all operations - blowers, hood, tower lamp, cooler, chain lubrication etc allowing easy maintenance & troubleshooting of faults at any section.



Automatic Hood Open/Close Mechanism allows easy access to heating chamber and conveyor system for cleaning and maintenance.



Other Software Features : Weekly/Daily Timer for programmed machine switching ON, 3 levels of User Password, Maintenance Calender, Error History, Calibration, Profile Run History, User Manual on Screen etc.



# Specifications

Technical changes reserved.

## Electrical Supply

Power Input	415V, 3ph, 50 Hz
MCCB	125A @ 415V
Switch ON Power Consumption	42 KW
Steady State Power Consumption	Around 10.5 KW
Sequential Zone Turn ON	Standard

## Dimensions

Overall Length	4320 mm
Overall Width	1320 mm
Overall Height (Include Signal Tower)	1730 mm
Nett Weight	1300 Kg
Shipping Dimensions (L x W x H)	4699 x 1755 x 1880 mm
Shipping Weight	2200 Kg

## Oven Control

PLC with PID	Standard
PC with LCD Monitor	Standard
Data Logging	Standard
Password Protection	Standard
Auto Start Software (Weekly/Daily Timer)	Standard
Hood Lifting	Motorised

## Mesh Belt Conveyor

Standard

Height From Floor	880+/- 25mm
Maximum PCB Width	400mm
Clearance above Mesh	60mm
Mesh Belt Pitch	12.5mm
Conveyor Direction	Left to Right , Standard Right to Left - OPTION
Maximum Conveyor Speed	2mtr/min / 200 CPM
Conveyor Speed Control	Closed loop

## Manufactured by



S. No. 43/3, New Gat No. 322, Plot No. 1,  
Pirangut, Tal. Mulshi, Dist. Pune - 412 115 INDIA

**emst**  
Marketing Pvt. Ltd.

## Sold & Serviced by

Gat No.322, Plot No.1, At Post- Pirangut Tal- Mulshi,  
Dist. PUNE 412115- India  
P: +91 95955 25010 | E: contact@emstonline.com  
W: www.emstonline.com

## Edge Pin Conveyor

Option

Height From Floor	900+/- 25mm
Minimum/Maximum PCB Width	50 / 400mm
Clearance Above Pins	30mm
Clearance Below Pins	35 (without mesh below)
Support Pin Length	3.5mm
Conveyor Direction	Left to Right , Standard Right to Left - OPTION
Conveyor Width Adjustment	Motorised - Standard Width Stting through Software - Option
Maximum Conveyor Speed	2mtr/min / 200 CPM
Conveyor Speed Control	Closed loop
Auto Lubrication System	Standard
Edge Pin Above Mesh (both Conveyor)	Option

## Forced Convection Zones

Top	8
Bottom	8
Heater Type	Open Coil
Total Heating Tunnel Length	2062mm
Total Process Length	2620mm

## Cooling Zones

No. of Cooling Zone	Two(Air cooling)
---------------------	------------------

## Temperature Control

Type of Temperature Control	PID
Accuracy of Temp. Controller	+/-1°C
Heater Wattage Per Zone	5000 W
Temperature Range	Ambient to 300 °C

## Additional Features

Profiler	4Ch, in-built profiler OPTION
Signal Tower	Standard
Power Hood lift	Standard
Board Drop Sensor	Standard
Board Counter	Standard
Battery back up for conveyor (UPS)	OPTION
SMEMA	OPTION
Center Board Support	OPTION
Flux Management System	OPTION

Owing to continuous Research and Development,  
specifications are subject to change without notice.