

# EMST Konark 710S

emst

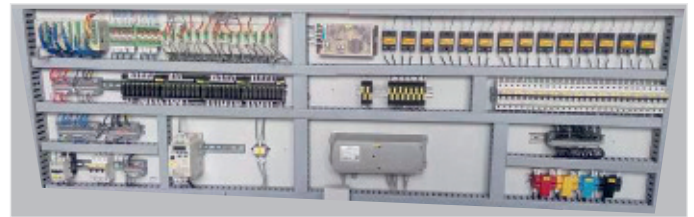
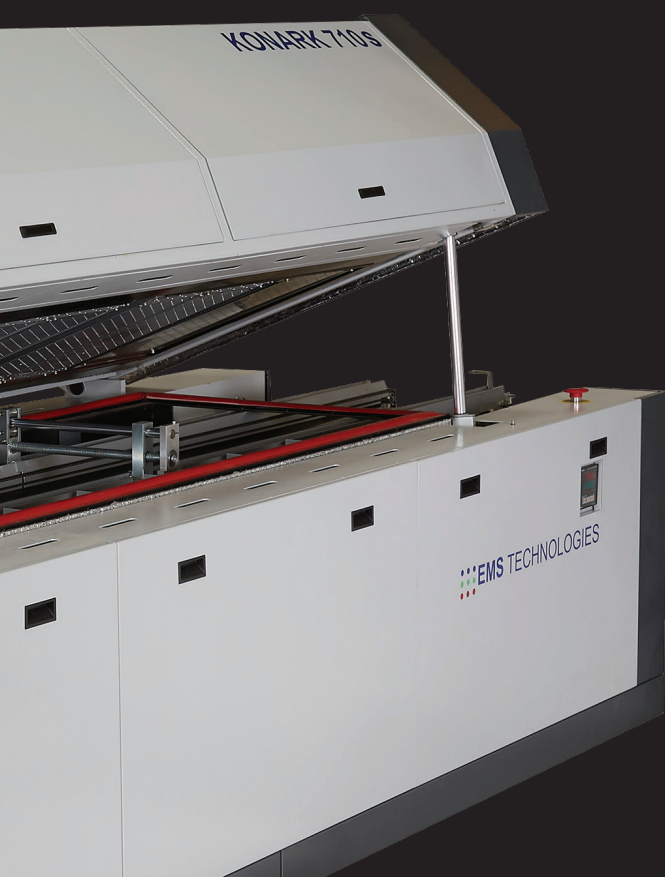


## Seven Zone Reflow Oven

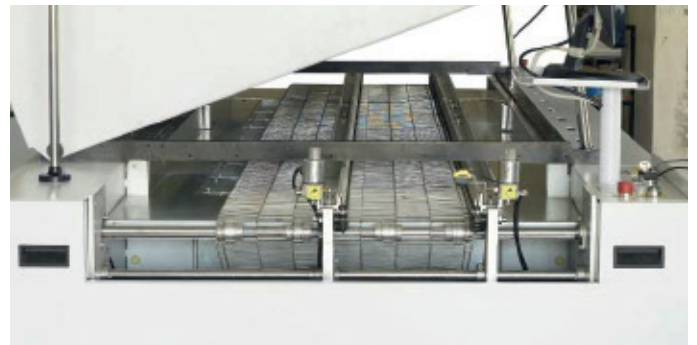
Konark 710S is the new seven zone reflow oven from EMS Technologies, Pune, India. With more than 20 years experience in manufacturing different PCB Assembly equipment like Wave Soldering Machines, Batch type Reflow Ovens, Stencil Printers, etc. We proudly introduce our new Konark 710S, the 7 - zone fully Hot Air Convection Reflow Oven. The oven comes with the same quality and reliability of our field proven Wave Soldering Machines.

# Features:

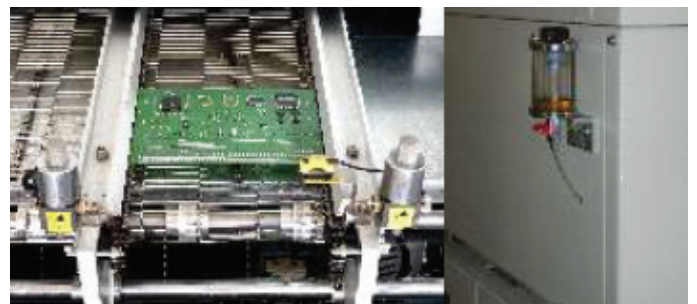
- 14 Independently PID Controlled Heating Zones (7 Top & 7 bottom zones)
- One Cooling Zone incorporated inside the process chamber.
- Tunnel length of 2415 mm.
- Maximum PCB width of 400 mm.
- Mesh, Chain (pin-edge) or Chain above mesh
- Auto conveyor width adjustment.
- Electrically Operated hood opening.
- Max. temperature : 300°C
- Lead-free compatible
- PC Control with windows - based operation
- 4 channel profiler option
- Flux Management System (Optional)
- SHEMA Interface (Optional)
- Blower speed adjustment option.



Well laid out control panel giving full access for easy maintenance.



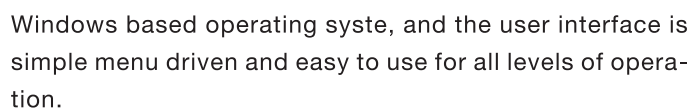
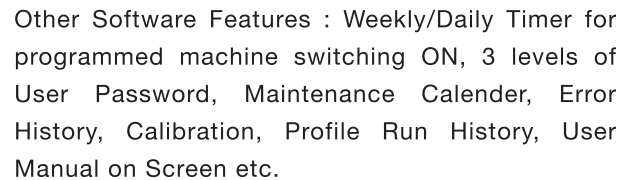
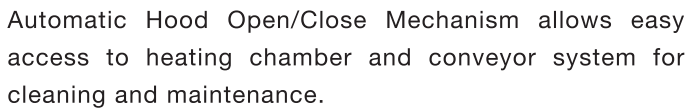
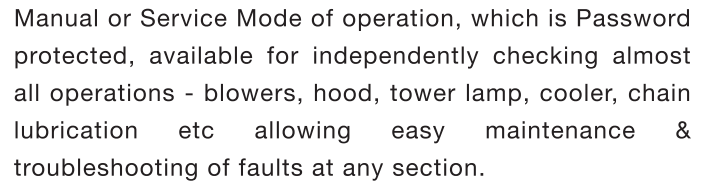
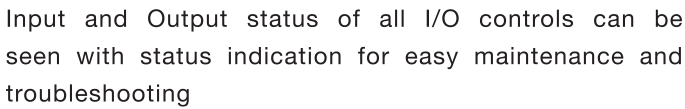
Conveyor rail made of special Aluminium alloy with high rigidity, accuracy and little distortion. Conveyor mesh made of Stainless Steel. Pin type conveyor for inline operation with 3 mm pin.



Automatic chain lubricating system, controlled by computer and can be programmed. Supply of oil from glass jar at the back of machine.



Optional 4 channel profiler allows full screen display of 4 thermocouple inputs on-line and also displays  $\Delta T$ .



# Specifications

Technical changes reserved.

## Electrical Supply

|                                |                  |
|--------------------------------|------------------|
| Power Input                    | 415V, 3ph, 50 Hz |
| MCCB                           | 100A @ 415V      |
| Peak Power Consumption         | 38 KW            |
| Steady State Power Consumption | Around 10 KW     |
| Sequential Zone Turn ON        | Standard         |

## Dimensions

|                                       |                                     |
|---------------------------------------|-------------------------------------|
| Overall Length                        | 3780 mm                             |
| Overall Width                         | 1315 mm<br>(1915 mm with Hood open) |
| Overall Height (Include Signal Tower) | 1950 mm                             |
| Nett Weight                           | 1400 kg                             |
| Shipping Dimensions (LxWxH)           | 4200 x 1765 x 1870 mm               |
| Shipping Weight                       | 2200 Kg                             |

## Oven Control

|  |                  |
|--|------------------|
| PLC with PID                             | Standard         |
| Touch Screen HMI                         | PC with Linux OS |
| Data Logging                             | Standard         |
| Password Protection                      | Standard         |
| Auto Start Software (Weekly/Daily Timer) | Standard         |
| Hood Lifting                             | Motorised        |

## Mesh Belt Conveyor

Standard

|                        |  |
|------------------------|--|
| Height From Floor      | 880 +/- 20 mm                                      |
| Maximum PCB Width      | 400mm  |
| Clearance above Mesh   | 60mm   |
| Mesh Belt Pitch        | 12.5mm   |
| Conveyor Direction     | Left to Right , Standard<br>Right to Left - OPTION |
| Maximum Conveyer Speed | 30 cm/min to 2 mtr/min                             |
| Conveyer Speed Control | Closed loop  |

## Manufactured by



S. No. 43/3, New Gat No. 322, Plot No. 1,  
Pirangut, Tal. Mulshi, Dist. Pune - 412 115 INDIA



## Sold & Serviced by

Gat No.322, Plot No.1, At Post- Pirangut Tal- Mulshi,  
Dist. PUNE 412115- India  
P: +91 95955 25010 | E: [contact@emstonline.com](mailto:contact@emstonline.com)  
W: [www.emstonline.com](http://www.emstonline.com)

## Edge Pin Conveyor

OPTION

|                                     |   |
|-------------------------------------|---|
| Height From Floor                   | 900+/- 25mm   |
| Minimum/Maximum PCB Width           | 50 / 400mm  |
| Clearance Above Pins                | 30mm  |
| Clearance Below Pins                | 35 (without mesh below)                               |
| Support Pin Length                  | 3.5mm   |
| Conveyor Direction                  | Left to Right , Standard<br>Right to Left - OPTION    |
| Conveyor Width Adjustment           | Manual - Standard<br>Motorised adjustment<br>- OPTION |
| Maximum Conveyor Speed              | 30 cm/min to 2 mtr/min                                |
| Conveyor Speed Control              | Closed loop   |
| Auto Lubrication System             | Standard  |
| Edge Pin Above Mesh (both Conveyor) | OPTION  |

## Forced Convection Zones

|                             |           |
|-----------------------------|-----------|
| Top                         | 7         |
| Bottom                      | 7         |
| Heater Type                 | Open Coil |
| Total Heating Tunnel Length | 1925mm    |
| Total Process Length        | 2415mm    |

## Cooling Zones

|                     |                   |
|---------------------|-------------------|
| No. of Cooling Zone | One (Air cooling) |
|---------------------|-------------------|

## Temperature Control

|                              |                   |
|------------------------------|-------------------|
| Type of Temperature Control  | PID               |
| Accuracy of Temp. Controller | +/-1°C            |
| Heater Wattage Per Zone      | 5000 W            |
| Temperature Range            | Ambient to 300 °C |

## Additional Features

|                                    |                                  |
|------------------------------------|----------------------------------|
| Profiler                           | 4Ch, in-built profiler<br>OPTION |
| Signal Tower                       | Standard                         |
| Power Hood lift                    | Standard                         |
| Board Drop Sensor                  | OPTION                           |
| Board Counter                      | Standard                         |
| Battery back up for conveyor (UPS) | OPTION                           |
| SMEMA                              | OPTION                           |
| Center Board Support               | OPTION                           |
| Flux Management System             | OPTION                           |
| Blower speed adjustment            | OPTION                           |

Owing to continuous Research and Development,  
specifications are subject to change without notice.