

DATASHEET

STCS VMir



> Media for this machine

Reference of the product

14-01-0022

Technology

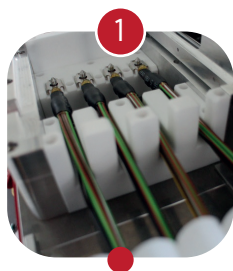
 Infrared

The STCS-VMir is a heat shrink system, based on infrared technology. It's designed for workbench applications and can process several parts at the same time.

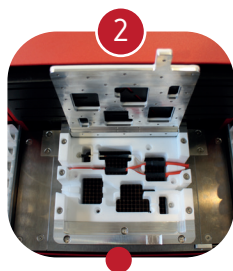
The same machine can be used on several applications, since it's equipped with a fast exchangeable shrinking chamber system.

The chambers are designed according with the application specifications, making them ideal for special applications.

The system was designed to ensure optimal conditions for CAN processing (normal and end splices), but can also be used for any given application.



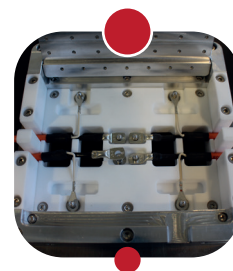
Fast changeable shrinking chamber



Open work area for faster setup time



New and improved interface based on Touchscreen technology, that allows network communication



Chambers can be customized for the most challenging and complex applications

Technical Data

WORKING TEMPERATURE

Minimum	250 [°C]
Maximum	550 [°C]

DIMENSIONS

Length	525 [mm]
Width	495 [mm]
Height	390 [mm]
Weight	32 [kg]

POWER SUPPLY/CONSUMPTION

Supply	230 [V] @ 50Hz
Consumption	500 mA to 7 A (Max. 1500W)

PNEUMATIC

Supply	Quick Hold Socket Ø8 [mm]
Supply Pressure	Min: 5bar; Max: 8bar; Rec: 6bar

CONNECTIONS

Barcode Reader	USB
Temperature	Type K Thermocouple
Power Line	1 IEC Socket
Programming	Touchscreen
Interface	Touchscreen, Buzzer and LED

SHRINKING CHAMBER

Shrinking Chamber	120x120x57 [mm]
Shrinking Tube Diameter [Max]	50 [mm]

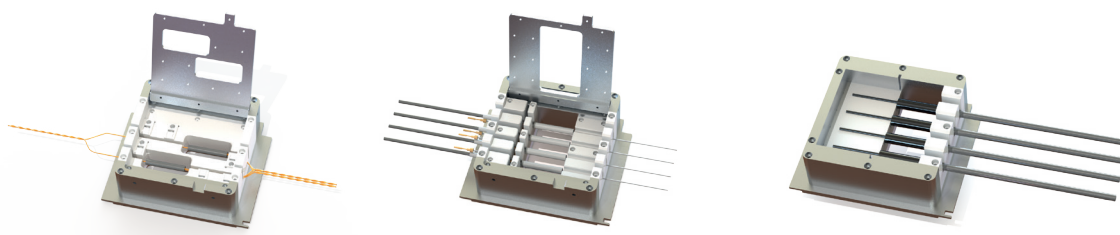
CALIBRATION

Calibration Probe	ref.: 06-01-0277
-------------------	------------------

Features

- Adjustable parameters: process temperature, shrinking time, cooling time etc;
- Easy and fast replaceable shrinking chamber;
- Two different operating modes: M1 with temperature and shrinking time control; and M2 mode with pre-programmed references [999 in total];
- Pre-programming of references using a PC with STCS-RCT software (reads Excel™ files) or a USB stick;
- Automatic selection of references using a barcode reader or manually on the Touchscreen;
- Easy firmware upgrade using a USB stick;
- Use of labels for each shrinking time inside a reference;
- Built-in cooling system;
- Manual and automatic calibration;
- Programming mode password protected;
- Special maintenance mode for hardware debug;
- External temperature probe connection for temperature reading and offset adjustment;
- Automatic cool-down cycle to extend the life of components;
- Partial and global cycle counter;
- Communication with ultrasonic welding machines;
- Working time counter;
- Network communication;
- Interchangeable system language including: English, Portuguese, French and Spanish (others on demand).

Options



- Custom shrinking chamber
Ref: 06-01-0222