

DATASHEET

STCS

VM



> Media for this machine

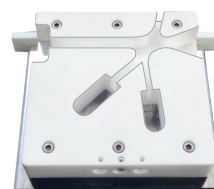
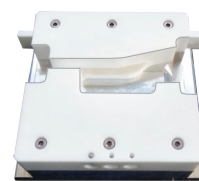
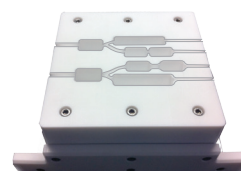
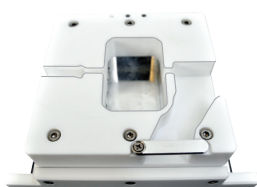
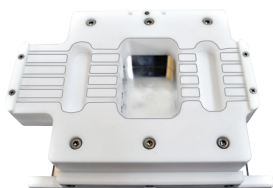
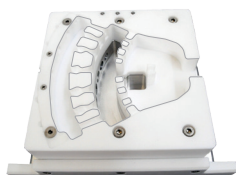
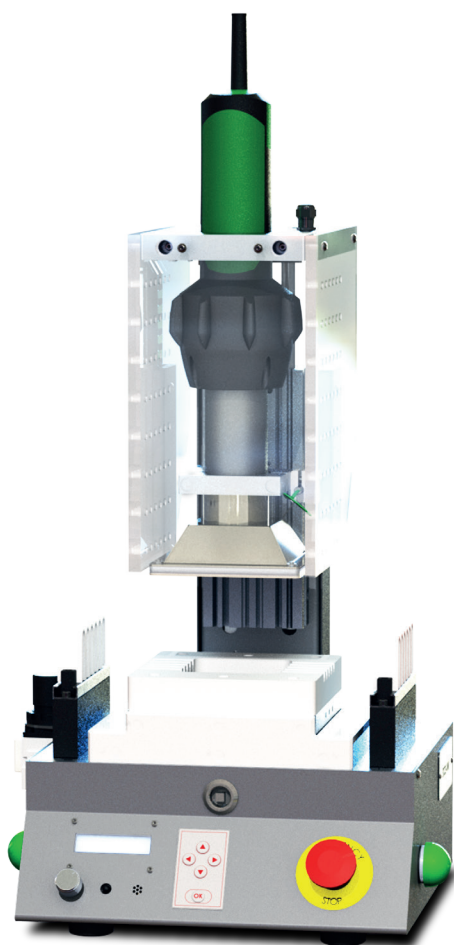
Reference of the product
14-01-0006

Technology
☑ Hot Air

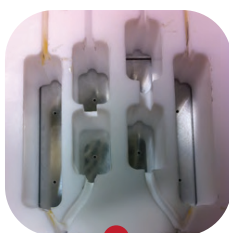
The STCS-VM is a machine for processing heat shrink tubes, based on hot air devices. It's designed for workbench applications and can process several parts at the same time.

The same machine can be used on several applications, since it's equipped with a fast exchangeable shrinking chamber system.

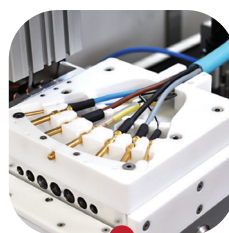
The chambers are designed in accordance with the application specifications, making them ideal for those where the assurance of the heat shrink tube position is mandatory.



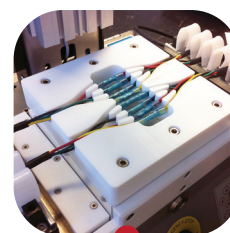
Fast changeable
shrinking chamber



Optional cooling
system



Chambers designed in
accordance with the
application, ensuring a
strict positioning of the
shrink tube during the
process



Can process several
parts simultaneously

Technical Data

WORKING TEMPERATURE

Minimum	150 [°C]
Maximum	350 [°C] (Due to material limitations, it's recommended to work below 280 °C)

DIMENSIONS

Length	315 [mm]
Width	375 [mm]
Height	600 [mm]
Weight	25 [kg]

POWER SUPPLY/CONSUMPTION

Supply	230 [V] @ 50Hz
Consumption	50 mA to 15 A (Max. 3400W)

CONNECTIONS

Barcode Reader	DB9 Male
Temperature Sensor	Type K Thermocouple
Power Line	1 IEC Socket
Programming	Membrane Keyboard
Interface	LCD 16x2, Buzzer and LED

SHRINKING CHAMBER

Shrinking Chamber [Max]	100x100x27 [mm]
Shrinking Tube Diameter [Max]	20 [mm]

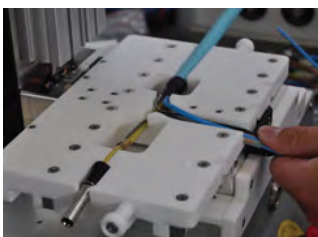
CALIBRATION

Calibration Probe	ref.: 05-10-0008
-------------------	------------------

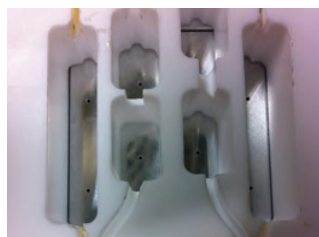
Features

- Adjustable parameters: process temperature, shrinking time, etc;
- Easy and fast replaceable shrinking chamber, locked by key;
- Two different operating modes: M1 with temperature control and shrinking time; and M2 mode with pre-programmed references (each reference can have from 1 to 20 shrinking times);
- The pre-programming of references can be done manually or using a PC with STCS-RCT software (reads Excel™ files);
- The selection of references can be done automatically using a barcode reader or manually using either the rotating knob or the keyboard;
- Can be supplied with a chamber detection system to automatically select the reference and adjust the parameters for a given chamber;
- Use of labels for each shrinking time inside a reference;
- Manual calibration;
- Programming and maintenance mode password protected;
- Special maintenance mode for hardware debug;
- Cycle counter;
- Interchangeable system language, including: Portuguese, English, French and Spanish (others on demand).

Options



- Custom shrinking chamber
Ref: 06-01-0056



- Cooling system
Ref: 06-01-0086



- Chamber detection system
Ref: 06-01-0128